

CERTIFIED LAND CORNER RECORDATION

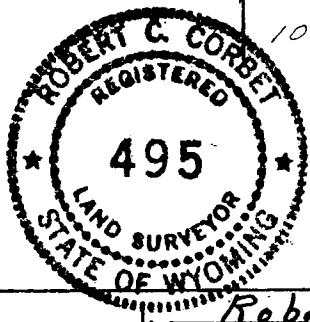
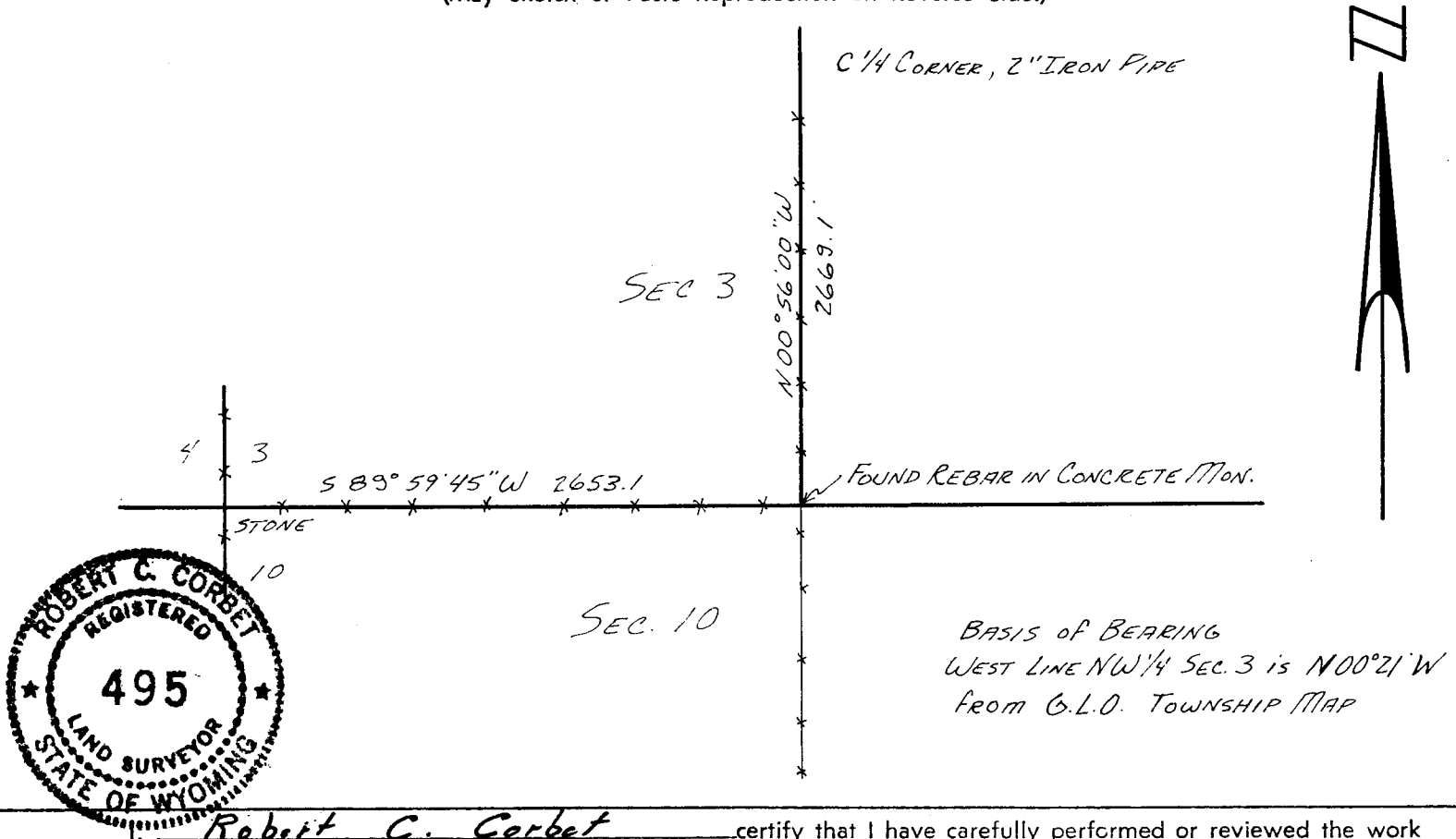
DESCRIPTION OF CORNER EVIDENCE FOUND, AND ORIGINAL RECORD (If known)

3/10 1/4 CORNER
 T. 14 N., R. 67 W., 6TH P.M.
 LARAMIE COUNTY, WYOMING

FOUND REBAR IN CENTER OF 1' SQUARE
 CONCRETE MONUMENT, LOCATED
 ON THE EAST SIDE OF FENCE CORNER

DESCRIPTION OF MONUMENT AND ACCESSORIES ESTABLISHED
 TO PERPETUATE THE ORIGINAL LOCATION OF THIS CORNER:

SKETCH, WITH COURSE AND DISTANCE TO ADJACENT CORNER IF DETERMINED IN THIS SURVEY.
 (May Sketch or Paste Reproduction on Reverse Side.)



Robert C. Corbet certify that I have carefully performed or reviewed the work done on the diagrammed corner as reported on this recordation form and approve the same.

Robert C. Corbet 495
 Signature of Surveyor Registration No.

STATE OF WYOMING,
 Office of Clerk and Recorder,
 County of Laramie

This "corner record" was filed for record on the 7 day of June, 1928, was noted on the cross-index plat and is assigned page No. _____, in book No. _____.

James C. Withhead
 County Official

Cross Index No.	T. _____	R. _____	Mer. _____
	<u>E 15</u>	<u>14</u>	<u>67</u>
	T. _____	R. _____	Mer. _____
	T. _____	R. _____	Mer. _____
	T. _____	R. _____	Mer. _____
	T. _____	R. _____	Mer. _____
	T. _____	R. _____	Mer. _____